

# ***TECHNICAL DATASHEET***

Updated in June 2022  
(tam.fr)



You are contemplating the staging of your show in our theater. The venue qualifies as an ERP (*Etablissement Recevant du Public*, French for Public Facility), of the L Type, 2nd category, as per standards defined by French regulations. The *Règlement de sécurité contre les risques d'incendie et de panique*, French for Fire and Panic Act Regulation, voted on June 25th 1980 is therefore applicable to our facility.

Maximum capacity inside the facility is 1177.

**Equipment delivery access : 69 bis avenue Paul Doumer 92500 Rueil-Malmaison, France**

Outwards opening double leaf hinged gate : 5 meters x 5 meters.

Leading to a closed unloading area.

Roofed loading dock (one-meter-high) located at the rear of the building.

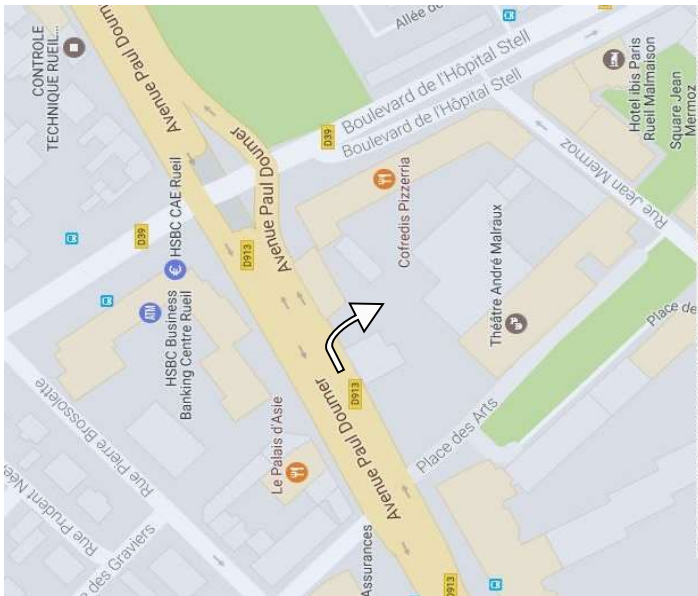
Restricted access. A pin code must be dialled to open the gate.(Contact Security).

Contact number : + 33 (0)1 41 39 07 75

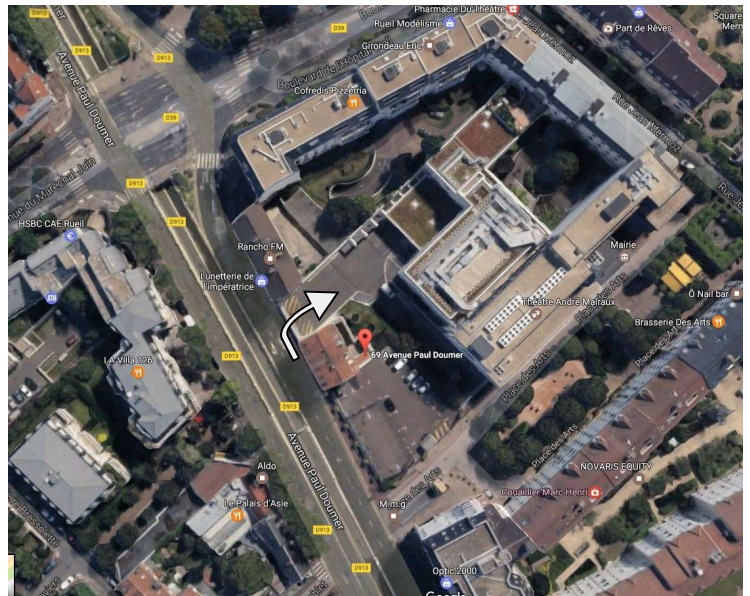
**Road access :**

- via A 86 : Côte de la Jonchère / D 173 Junction

- From Paris Porte Maillot: Towards Rueil-Malmaison via N 13, A 14 & D 913.




Citymap of Rueil-Malmaison



Equipment delivery access

**Public transportation :**

From Paris;

-  : Either Gare Rueil-Malmaison or La Défense (faster).

From the RER train station in Rueil-Malmaison;

- On foot, allow 20 minutes.
- By bus: use bus **144** . Get off at Rueil-Ville.

From the RER train station in La Défense;

- By bus: use bus **258** . Get off at Rueil-Ville.

## **The venue :**



TAM was first inaugurated in 1973. It underwent significant overhauling and renovation which kept it out of operation for eighteen months from June 2005 to November 2006. The stage house was rebuilt from scratch and fitted with new equipment, new dressing rooms were added, the equipment delivery access was made more functional. The hall, the foyer and the bar were renovated from top to bottom and new equipment was installed.

**Type of audience chamber :** Facing the stage – with balcony.

**Capacity :** Seating : 854 (including 6 tip-up seats). Seating does not include seats in the orchestra pit. Seating includes 72 seats on the balcony.

751 seats with orchestra pit.

Capacities hereabove may vary depending on space allocated for disabled persons or technical features such as follow spots.

**Entering and seating of spectators at least 30 minutes before rise of curtain.**

### **Booth :**

The booth is located under the hall's balcony.

It is secluded from the audience space by a sliding glass pannel.

The distance from the booth (when closed) to the edge of the stage is 17 meters.

### **Miscellaneous :**

Follow spots are positionned at the center and on either side of the balcony.

A virtual tour of the venue is on offer on website [www.tam](http://www.tam). Key in "accès pro", password "TAMPRO".

## Artists' and techies' contact persons at TAM:

### Our Tech Crew :

Philippe BEUNARD	Technical Manager	+ 33 (0)6.84.67.72.35	<a href="mailto:dt@tam.fr">dt@tam.fr</a>
Melki KHERFI	Master Electrician		<a href="mailto:lumiere@tam.fr">lumiere@tam.fr</a>
Mathieu VILLIEN	Master Electrician		
Patrick ROBILLARD	Assistant Stage Manager		<a href="mailto:plateau@tam.fr">plateau@tam.fr</a>
Vladimir CRIZNIC	Assistant Stage Manager		
Hadrien POUILLOT	Soundmaster		<a href="mailto:son@tam.fr">son@tam.fr</a>
Abdel NEGHIZ	Service Technician		<a href="mailto:maintenance@tam.fr">maintenance@tam.fr</a>

### Work Schedules :

Work schedules are defined and agreed upon between TAM's Technical Management and the visiting companies, representatives, within limits set by *Convention Collective des entreprises Artistiques et Culturelles* (French for Art and Culture Trade Agreement) and by agreements priorly entered into by the management of the theater and its workers.

Plannings are defined on a monthly basis and may not be changed later than three weeks before the date.

### Dressing rooms and amenities :

2 individual dressing rooms, each with a shower and a restroom on ground floor (at stage level).

15 dressing rooms for two, each with a shower and a bathroom sink (on three different floors).

4 shared dressing rooms (2 rooms on 1st floor and 2 rooms on 3rd floor).

1 green room / snack bar (2<sup>nd</sup> floor).

1 laundry room including : 2 washing machines, 1 laundry drier, 1 ironing board, 1 iron. 1 hot water faucet, one cold water faucet. (2<sup>nd</sup> floor).

1 wardrobe supervisor room ( level 2).

### CAVEATS

1. Articles L3511-7 and R3511-1 of Loi Evin (French for the Tobacco Smoking Ban Act) provide that smoking in public facilities is strictly prohibited.
2. All sets and materials used in costumes must be fire retardant and comply with M0 or M1 standard.  
**Kindly provide compliance to standards certificates.**
3. Unless they are used in the actual performance, animals are not allowed in the theater.

### FIRE-MAKING DEVICES

The use of any fire-making device, be they candles or fireworks must get clearance from the management. An formal request for permission must be submitted.



## The stage – The rigging :

Acting space : 473 square meters. Wooden floor (chestnut tree wood, black). Stage access area : 120 square meters.

Proscenium : Width of frame : 15 to 20 meters. Height : 6,90 meters. Height to gridiron : 14 meters

Distance from edge of stage to rear wall : 15,80 meters.

Width of stage from wall to wall : 28,80 meters

Distance from edge of stage to rear catwalk : 14,58 meters.

### Battens in hall area

2 15-meter-long powered units , located right above the proscenium. Max load 300 kgs. (Beams **M3 and M4** in hall)

### Manually flown drapery

Draperies are installed on either side of the proscenium, thus enabling the reduction of its width from 20 meters to 15 meters. Each part is 9.00 meters high and 2.50 meters wide.

### Main drape

Hanging from powered **batten n° 1**. See appended floorplan. Electrically powered opening of red draw curtains.

Curtains are red. Border and leg of proscenium frame ( grand valance ) in **P2 and P3**.

### Back drop

Hanging **from batten N°38**. At a 12.42 meters distance from the lip of the apron. The black velvet tableaux curtains are manually operated with a 23 meters traveller. Draw opening. Height : 10 meters. Maximum linear load : 350 kgs.

40 counterweighted rope set systems, length : 23 meters, Maximum linear load : 350 kgs

4 single-gear electrically powered rope set systems, length : 23 meters, Max linear load : 500 kgs: **P15, 16 ,17 and 18**.

2 electrically powered rope set systems on prompt side and opposite prompt side, length : 13 meters, Maximum load : 350 Kgs

### Borders

Five 25 meters long by 3.50 meters high borders.

Two 23 meters long by 3,50 meters high borders.

One 22.50 meters long by 4 meters high grand valance border.

### Legs

Ten 4 meters wide by 8 meters high units

Ten 4.40 meters wide by 8 meters high units

Six 6 meters wide by 8 meters high units

Two 7 meters wide by 7 meters high partial backdrops

### Cyclorama

White. 16.00 meters wide by 7.00 meters high

### Marley flooring rolls

9 rolls (2 meters wide by 13.00 meters long) (facing rear wall)

### Concert Equipment

40 parallels (2.00 meters by 1.00 meter). 60 music stands, 59 chairs

## DIMENSIONS of the CATWALKS

### Catwalks inside the hall

Catwalk - Distance to edge of the stage : **1.51 meters** - **Height of railing** : 8.30 meters

Catwalk - Distance to edge of the stage : **6.24 m** **Height of railing** : 8.50 meters to 9.00 meters

Catwalks on prompt side and opposite prompt side on **Level 1** : **Height of railing** : 5.50 meters

Catwalks on prompt side and opposite prompt side on **Level 2** : **Height of railing** : 8.00 meters

### Railings at the rear of the hall

**Distance to the edge of the stage : 17.50 meters. Height : 7 meters /linear surplus weight ± 100 daN/ml**

## Video Equipment

Digital connections between booth, stage and catwalks via Rj45 Cat 6 cables and Full Hd converters.

(Special requests to be submitted to Technical Management)

## **Sound Equipment**

### **Sound System :**

L-Acoustics comprised of 8 KARA(i) and 3 SB 18(i) on either side.

+ un point central avec trois Kiva(i).

+ two InFill X 12

+ Four FrontFill X 8

Amplified with 7 LA4X Contrôleur PFC 4 x 1000 W/ 8 Ohms.

Convertisseur Dante/AES-EBU Auvitrان Tool Box

The front can be sounded either by Dante Network or by analog network.

### **Mixing Desks:**

Yamaha CL3 with set of VU meters, lamps, external power supply for redundancy, flight-case.

Yamaha M7CL-48 with set of VU meters, lamps and Dante MY16-AUD card.

### **Audio return system:**

Four PS15 NEXO speakers and two PS 15 R2 speakers.

Two PS10 NEXO speakers.

Four PS8 NEXO speakers.

Amplified by two NXamp 4x1000 W + Dante NXDT104 cards.

### **Patches :**

One mobile rack equipped with RIO 32 ins / 24 outs.

One mobile rack equipped with RIO 16 ins / 8 outs.

Eight analog ins on prompt side and eight analog outs on opposite prompt side orchestra pit.

### **Sources :**

One CD/USB/CF auto pause/auto cue Tascam SS-CDR200 player recorder.

One CD auto pause/auto cue Tascam CD-RW900SL player recorder and reader.

One Denon DV-C635 CD player.

One MD auto pause Sony MDS-E55 player recorder and reader.

### **Wired Microphones :**

Six AKG SE 300 B with capsules :

Four CK91, 2 CK92 et 2 CK93

Four PZM Shure Beta 91

Eight SHURE SM 58

Seven SHURE SM 57

Four AKG C451

Five SENNHEISER MD 421

Two M88 TG BEYER DYNAMICS

One AKG 535 EB

One SHURE Beta 87A

One SHURE Beta 58

One AKG D112

One col de cygne AUDIO TECHNICA AT808G

### **Intercom Systems :**

One HF Altair WBS 202 station (8 channels)

Four HF Altair Wireless Beltpack wbp-210

Six wired Clearcom terminals

### **Wireless Microphones :**

Two UR4D Wireless receivers.

+ Four handheld transmitters UR2 capsule SM58

One UR4D receiver+ Two pocket UR1 transmitter.

One DPA 4088 headset microphone with adapter.

One DPA D-fine cardio headset microphone with adapter.

Two Shure cardio lapel mikes capsules.

### **Active DI boxes:**

6 BSS AR-133 active

### **Microphone stands :**

One tall microphone with boom arm and round base.

Fifteen tall boom equipped microphone stands.

Seven short boom equipped microphone stands.

### **Stage auditionning and instructiong equipment :**

Monitor system, instructions to set via two AKG C451E.

Console with monitoring microphone (in set booth).

## Lighting

### Mixing desk :

- One AVAB - CONGO KID 512 circuits console
- Two Monitors, I.R. remote control.

Digital ADB dimmer :    **294** 3-KW circuits        **18** 5-KW circuits

Units	References	Types	Power	Makes
60	310 HPC	PC	1000 W	JULIAT
30		PC	2000 W	R.V.E
10	329 HPC	PC	2000 W	JULIAT
6	Racks	ACL	250 W	
30	614 SX	PROFILE SPOT 16°/35°	1000 w	JULIAT
8	613 SX	PROFILE SPOT 28°/54°	1000 W	JULIAT
8	713 SX	PROFILE SPOT 29°/50°	2000 W	JULIAT
10	714 SX	PROFILE SPOT 15°/40°	2000 W	JULIAT
50		PAR 64    240 V	1000 W	DTS
10	Racks	PAR 64    240 V	1000 W	DTS
4	T 8	Dichroic spotlights rack	8 X 75 W / 14,5 V	
3		Fresnel lanterns (4 faces barn doors)	5000 W	POLLUX
3		Fresnel lanterns(4 faces barn doors)	5000 W	
10	BT	LOW TENSION	250 W	SCENILUX
4	BT	LOW TENSION	500 W	SCENILUX
45		Asymetric Strip Lights	1000 W	A.D.B.
28	RUSH	PAR LEDS RGWB		MARTIN
4		Barndoors-fitted Floodlights	2000 w	
2	KORIGAN	FOLLOW SPOT	1200 HMI	JULIAT
1	STARWAY	Strobe Light	1500 W	
2		BLINDERS (Lighting of Hall)	8 X 650 W	
1	ZR 33	Fog Machine	1500 W	JEM
4		SPOTLIGHT STANDS		3 meters
8		SPOTLIGHT STANDS		3.80 meters

### **Accessories :**

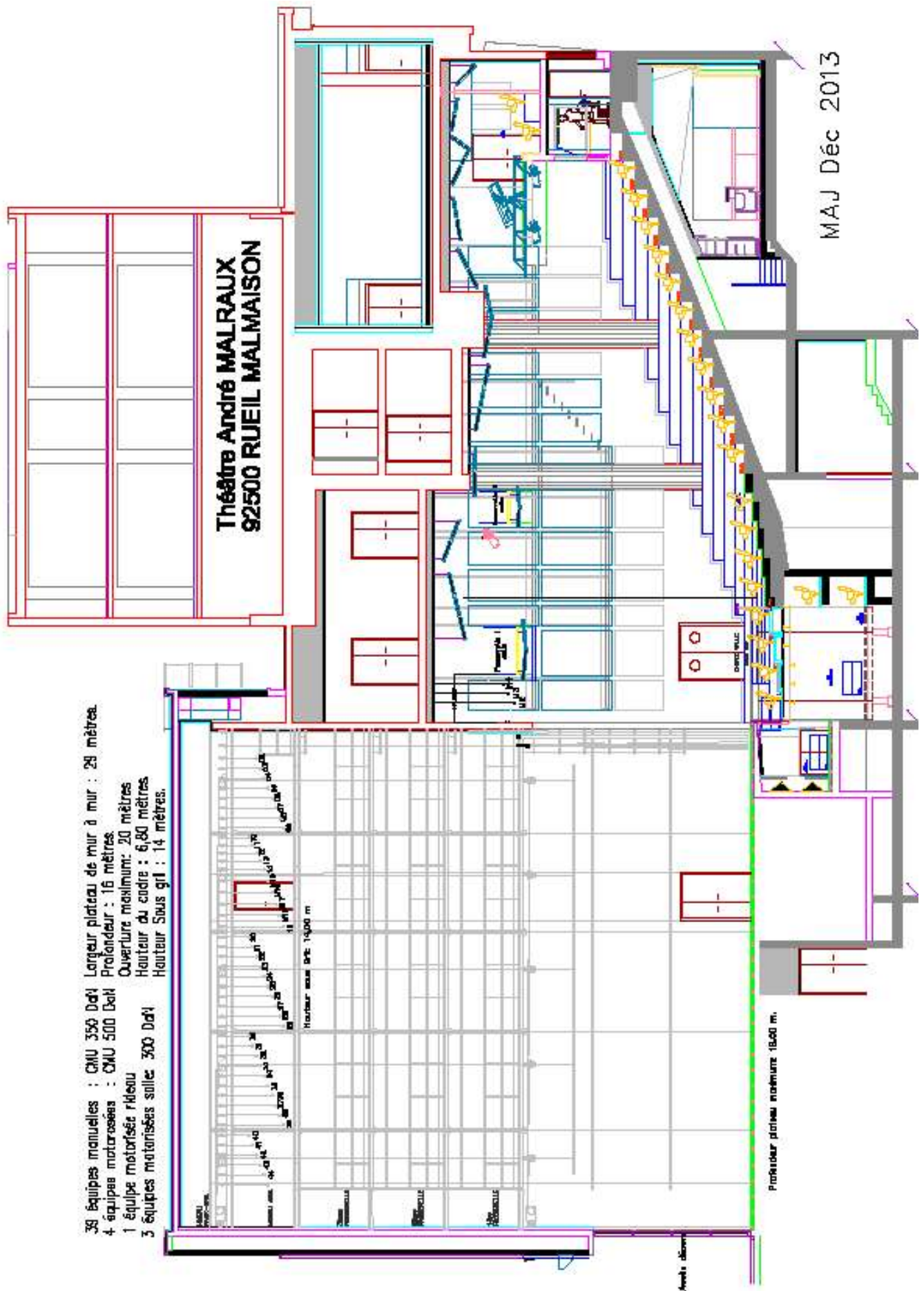
Barn doors for 1 KW PC

Barn doors for 2 KW PC

Gobo and IRIS slot holder







Longueur plateau de mur à mur : 29 mètres.  
 Profondeur : 16 mètres.  
 Ouverture maximum: 20 mètres  
 Hauteur du cadre : 6,80 mètres.  
 Hauteur Sous gri : 14 mètres.

Théâtre André MALRAUX  
 92500 RUEIL MALMAISON

39 équipes manuelles : CMU 350 DaN  
 4 équipes motorisées : CMU 500 DaN  
 1 équipe motorisée rideau  
 3 équipes motorisées salle: 300 DaN

